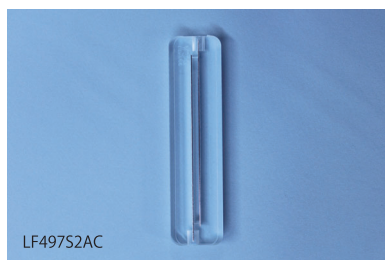


Cell fusion

LF497 series

Autoclavable chamber electrode



LF497S2AC

How to read catalogue no

LF497 S 2 AC

distance between electrodes (mm)

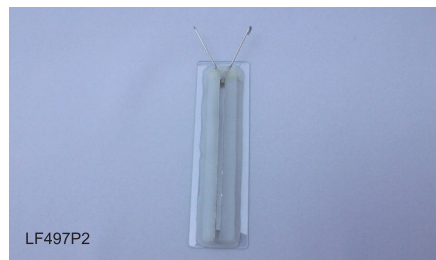
electrode material: stainless steel

| Series | Cat no | L x W x H |
|--------|-----------|---------------------------------|
| | LF497S2AC | 80mm x 2mm x 5mm Volume : 0.8ml |
| | LF497S3AC | 80mm x 3mm x 5mm Volume : 1.2ml |
| | LF497S4AC | 80mm x 4mm x 5mm Volume : 1.6ml |
| | | |

The bottom of the electrode is clear so that the cells can be observed under a microscope. Protective glass lid is attached to prevent contamination.

LF497 series

Large volume chamber electrode



LF497P2

How to read catalogue no

LF497 P 1

distance between electrodes

electrode material: platinum coating

* A unit of distance is mm

| Series | Cat no | L x W x H |
|--------|---------|---------------------------------|
| | LF497P1 | 80mm x 1mm x 5mm Volume : 0.4ml |
| | LF497P2 | 80mm x 2mm x 5mm Volume : 0.8ml |
| | LF497P3 | 80mm x 3mm x 5mm Volume : 1.2ml |
| | LF497P4 | 80mm x 4mm x 5mm Volume : 1.6ml |

A chamber can be observed by stereo microscope during operation as a bottom of a chamber is a microslide. Option: Clear box for sample protection(LF499L)

LF500 series

Gold wire electrode (for trial use)



LF500G1

How to read catalogue no

LF500 G 1

distance between electrodes

electrode material: platinum coating

* A unit of distance is mm

Series

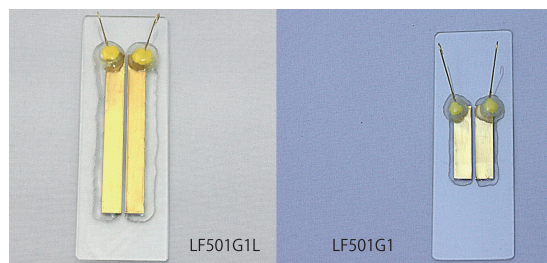
LF500G0.5 LF500G1 LF500G2

* Including three pieces per each

A chamber can be observed by stereo microscope during operation as a bottom of a chamber is a microslide.

LF501 series

Gold block electrode



LF501G1L

LF501G1

How to read catalogue no

LF501 G 1 L

length of block Standard: 20mm
L (Long type) : 50mm

distance between electrodes

electrode material: platinum coating

* A unit of distance is mm

| Series | Cat no | L x W x H |
|--------|------------|--------------------------------------|
| | LF501G0.5 | 20mm x 0.5mm x 0.5mm Volume : 5μl |
| | LF501G1 | 20mm x 1mm x 0.5mm Volume : 10μl |
| | LF501G2 | 20mm x 2mm x 0.5mm Volume : 20μl |
| | LF501G0.5L | 50mm x 0.5mm x 0.5mm Volume : 12.5μl |
| | LF501G1L | 50mm x 1mm x 0.5mm Volume : 25μl |
| | LF501G2L | 50mm x 2mm x 0.5mm Volume : 50μl |

A chamber can be observed by stereo microscope during operation as a bottom of a chamber is a microslide.

* Product specifications are subject to change without notice

Oocyte activation

LF5000 series

Platinum wire electrodes on petridish



How to read catalogue no

LF5000 P 1

distance between electrodes

electrode material: platinum coating

* A unit of distance is mm

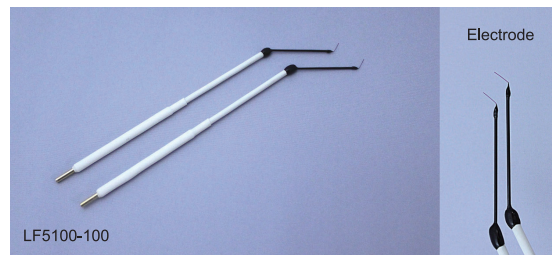
Series

LF5000P0.5 LF5000P1 LF5000P2

Somatic nuclear transfer

LF5100 series

Needle electrode



How to read catalogue no

LF5100 - 100

diameter of electrode tip

* A unit of diameter is μm

Series

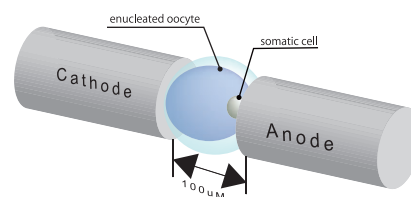
LF5100-100 LF5100-150

See Application 15

Advantage of LF5000 series

1. Able to check the condition of an egg visually prior to fusion
2. Dose not need the alternative current (AC) for compression of an oocyte and donor cell as they are compressed by a pair of needle physically.
3. Able to work efficiently as dozens of eggs are prepared in a petridish
4. Dose not require high voltage (200-300V) but only voltage around 50V as the distance between electrodes is short

Somatic cell nuclear transfer



Accessories & cables

D200

Footswitch



For CFB16-HB • GEB15Plus • LF301

D115CB

Connector cable



For CFB16-HB • GEB15Plus • LF301

D117

Hook cable



Compatible with D115CB