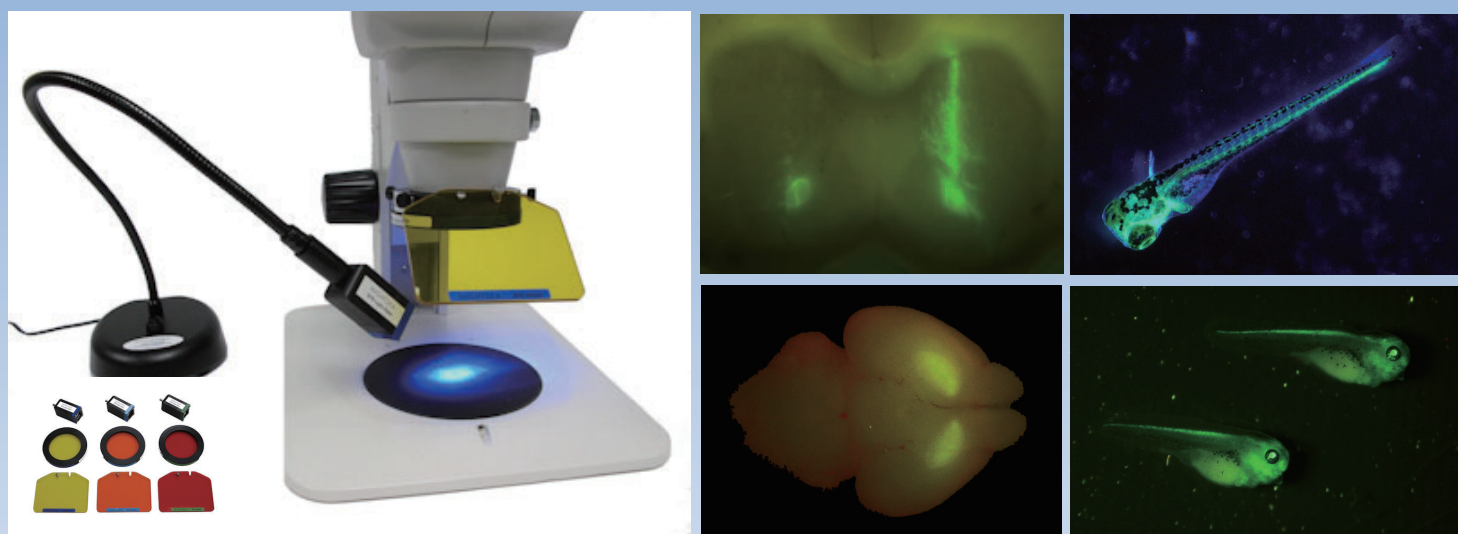


# Stereo Microscope Fluorescence Adapter

## Features

**Detects fluorescent proteins (GFP, YFP, RFP, etc.) just like a fluorescent stereo microscope.**

This fluorescent adapter allows you to detect a wide variety of fluorescent proteins with your stereo microscope. The filters attach magnetically so they can be easily removed at any time.



Light/Filter Set	Excitation Light	Emission Filter	Detectable Agents
Royal Blue (RB)	440-460nm	500nm LP	GFP, EGFP, fluorescein, etc.
Cyan (CY)	490-515nm	550nm LP	YFP, Venus, Lucifer yellow, etc.
Green (GR)	510-540nm	600nm LP	RFP, mScarlet, DsRed, dTomato, etc.
Royal Blue-Green Only (RB-GO)	440-540nm	500-560nm BP	GFP, EGFP, fluorescein, etc.

## Product No. and Contents

SFA-RB, SFA-RB-GO, SFA-CY, SFA-GR

Complete set that includes the following items:

- Flexible lamp base with control circuit
- Power supply that operates from 120/240VAC, 50/60Hz and international plug set
- Adapter that mounts on virtually any existing stereo microscope
- LED light head
- Barrier filter that attaches to the adapter with a simple magnetic click
- Viewing shield made of matching filter material

LFS-RB, LFS-RB-GO, LFS-CY, LFS-GR

LED light head/filter sets without lamp base/power supply/mounting adapter.

\* Product specifications are subject to change without notice